

# SECURING SUSTAINABLE GROUNDWATER

in the SLO Basin



COUNTY  
OF SAN LUIS  
OBISPO

A QUARTERLY UPDATE OF THE SLO BASIN GROUNDWATER SUSTAINABILITY PLAN DEVELOPMENT  
VOLUME 2 | OCTOBER 2019

## More than 50 in Attendance at August Public Workshop

### Workshop Covered SGMA and Groundwater 101

The City and County of San Luis Obispo would like to thank all who attended the first public workshop on August 14, 2019. GSP workshops provide an important method for stakeholders to learn about and inform the development of the SLO Basin Groundwater Sustainability Plan (GSP).

During the two-hour workshop, presenters from the GSP consultant team provided an educational program that was well received by attendees. Topics included:

- Sustainable Groundwater Management Act (SGMA) requirements and key deadlines
- Principles of groundwater flows and the

data considered to assess the groundwater conditions of the Basin

- The time scale difference of how surface water flows compare to groundwater
- Current groundwater data gaps within the SLO Basin
- A snapshot of the current groundwater levels within the SLO Basin
- Details on how stakeholders can actively participate in the development of the SLO Basin GSP

Learn about these topics and more — listen to the workshop audio recording or view workshop slides at: [SLOWaterBasin.com/resources](https://www.slowaterbasin.com/resources).

### In this issue

- MEETING SUMMARIES – page 2
- HOW TO PARTICIPATE – page 3
- PROJECT TIMELINE – page 4
- ACCOMMODATIONS – page 4

### Why am I receiving this?

- » You live or work in the SLO Basin
- » You may be affected by the SLO Basin's groundwater use
- » You subscribed to receive updates about SGMA or GSP development

Throughout the duration of the SLO Basin GSP development, this newsletter will be distributed quarterly to all subscribers of the SLOWaterBasin.com Portal and made available at GSC meetings and stakeholder workshops. To stop receiving these newsletters, go to SLOWaterBasin.com, scroll to the bottom of the page and click “unsubscribe.”

### How can we improve this newsletter?

Please share your feedback on what else you'd like to read in this newsletter and how we can improve our stakeholder outreach. Submit your feedback at SLOWaterBasin.com click on “Comment.”



LEFT: David O'Rourke, a hydrogeologist from GSI Water Solutions, educates stakeholders about the key tools and data that will be used to understand the groundwater conditions of the SLO Basin. Such tools include hydrographs (an example is shown in the photo to the left), water level maps, changes in water levels, and the water budget.

# September 11, 2019

## GSC Meeting Summary

### SGMA Compliance Efforts to Date

Attendees received a summary of SGMA compliance efforts to date, including background on governance, as well as the formation of the Groundwater Sustainability Agencies (GSAs) and the Groundwater Sustainability Commission (GSC). Compliance efforts completed since the June 12 GSC meeting include:

- The draft Communications and Engagement Plan (C&E Plan) was posted for public comment to SLOWaterBasin.com from July 24, 2019-August 31, 2019. All public comments for the C&E Plan have been posted at [SLOWaterBasin.com/review-documents](https://SLOWaterBasin.com/review-documents).
- The first Stakeholder Workshop was held on August 21, 2019 and provided an overview of SGMA and the key considerations for achieving sustainable groundwater management. If you missed this meeting or would like to learn more, find an audio recording of the workshop and presentation slides at [SLOWaterBasin.com/resources](https://SLOWaterBasin.com/resources).

### Chapters 1-2 Open for Public Comment

The consulting team of Water Systems Consulting (WSC) and GSI

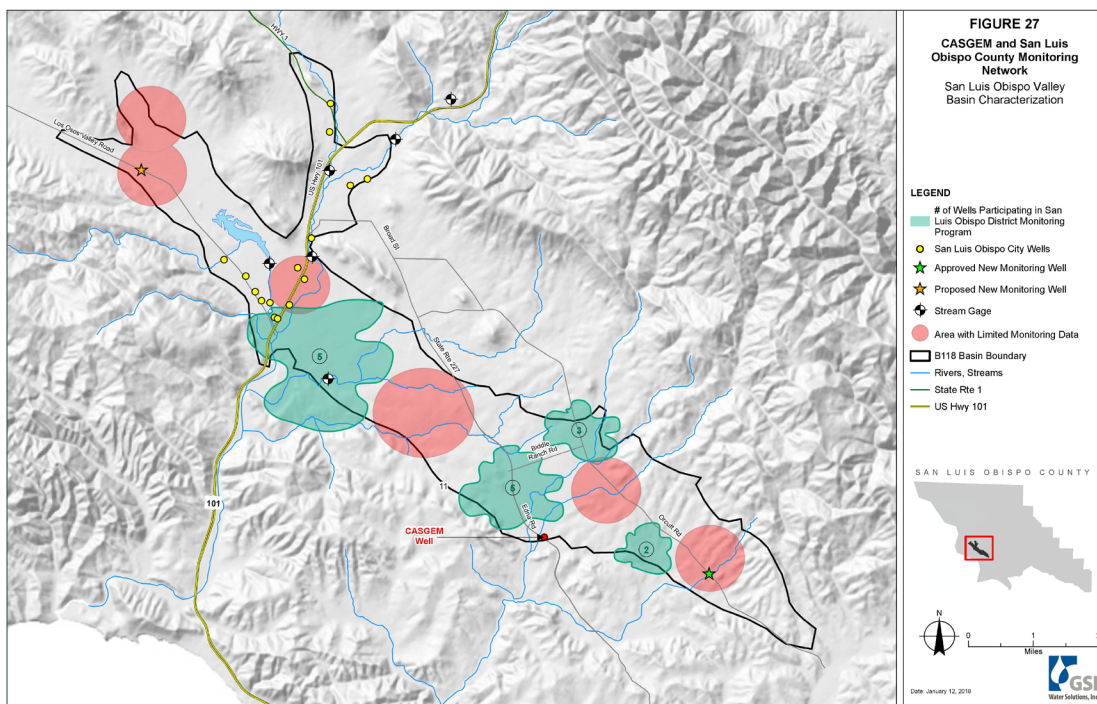
Water Solutions (GSI) presented a summary of Chapters 1 and 2 of the Groundwater Sustainability Plan (GSP), which covers materials for administrative information. A draft of Chapters 1 and 2 was approved by the GSC to be published to SLOWaterBasin.com for public comment. Public comment for Chapters 1 and 2 remains open through October 31, 2019. To review the chapters and submit comments, please visit [SLOWaterBasin.com/review-documents](https://SLOWaterBasin.com/review-documents).

- **Chapter 1: Introduction to the SLO Basin GSP** — This chapter summarizes the purpose of the GSP, describes the characteristics of the SLO Basin, and explains why the Department of Water Resources (DWR) gave the Basin a high priority designation.
- **Chapter 2: Agency Information** — This chapter summarizes the GSA governance structure, how the GSAs and the GSC are organized, the authority each agency has in developing and implementing the GSP, and the coordination agreement established between the agencies via the Memorandum of Agreement (MOA).

### Basin Setting and Integrated Groundwater/Surface Water Model Update

The consulting team of WSC and GSI provided an update on the Basin Setting chapter, as well as the development of the integrated groundwater/surface water model. Drafts of Chapters 4-5 covering the Basin Setting will be presented at the December 11, 2019 GSC meeting; Chapter 6 covering the Basin Setting will be presented at the March 13, 2020 GSC meeting.

*Continued on page 4*



### Do You Have Groundwater or Well Data? Let's Talk!

We need your help filling current gaps in well data for the SLO Basin. If you are a land or well owner with data you're willing to share (and/or you believe data is being collected on your well by your well service contractor), please contact Michael Cruikshank at Water Systems Consulting at [mcruikshank@wsc-inc.com](mailto:mcruikshank@wsc-inc.com) or 949-528-0960 ext. 601.

ABOVE: Data promotes defensible decision making. The above map reflects the County of San Luis Obispo's monitoring network. Data from the City of San Luis Obispo and other stakeholders will be added to the monitoring network with the goal of achieving full coverage of the Basin.

# Project Milestones and Opportunities to Participate

To meet the required completion deadline of January 31, 2022, the GSP will be developed in phases through the end of 2021. During this period, there will be ample opportunity for the public to participate in the plan development process, including participation in quarterly public GSC meetings, interactive workshops, and review and comment for each GSP chapter/section.



**Workshop #1 Audio Recording / WORKSHOP HELD ON AUG. 14, 2019** — An audio recording of the first stakeholder workshop, “SGMA and Groundwater 101” is now available. To access the recording, go to [SLOWaterBasin.com](http://SLOWaterBasin.com), click on “Resources” and scroll down to “Stakeholder Workshop Materials.”



## C&E Plan / VIEW SUBMITTED COMMENTS

The Commenting period for the C&E Plan is now closed. View all public comments submitted for the Communications and Engagement Plan (C&E Plan) at [SLOWaterBasin.com](http://SLOWaterBasin.com), click on “Review Documents,” and scroll down to “Documents Closed for Public Comment.”



## Chapters 1-2: Administrative Information REVIEW AND COMMENT

**DEADLINE OCT. 31, 2019** — Chapters 1 and 2 describe the GSA’s authorities as it relates to SGMA and the purpose of the Groundwater Sustainability Plan. To review or comment on Chapters 1 and 2, go to [SLOWaterBasin.com](http://SLOWaterBasin.com) and click on “Review Documents.” The commenting period closes October 31, 2019.



## Next GSC Meeting / MEETING

**DEC. 11, 2019 • 3:30pm-5:30pm** — The public is invited to join the next quarterly GSC meeting. An agenda for this meeting will be posted on the Portal as soon as it becomes available.

**WHERE:** Ludwick Community Center, 864 Santa Rosa Street, San Luis Obispo, CA.

**WHO SHOULD ATTEND:** Stakeholders interested in, or affected by, the management of groundwater resources in the SLO Basin. Registration is preferred but not required at [SLOWaterBasin.com](http://SLOWaterBasin.com).

## Future GSC Chapter/Section Review Opportunities

### Chapters 1-3: Administrative Information

Chapters 1 through 3 describe the GSA’s authorities as it relates to SGMA and the purpose of the Groundwater Sustainability Plan.

**GSC MEETING:** Held 9/11/2019

**WORKSHOP:** SGMA and Groundwater 101 • Held on 08/14/2019

**REVIEW AND COMMENT:** Public Comment is now open for Chapters 1-2 and closes on Oct. 31, 2019. Public Comment on Chapter 3 opens approx. Dec. 12, 2019.

### Chapters 4-6: Basin Setting

Chapters 4 through 6 document the existing basin setting information and provide the foundation for a technically defensible GSP. The three basin setting chapters include the hydrogeologic conceptual model, groundwater conditions, and water budget.

**GSC MEETINGS:** 12/11/2019; 03/11/2020

**WORKSHOP:** Approx. 02/2020

**REVIEW AND COMMENT:** Approx. 12/2019 and 03/2020

### Chapters 7-8: Sustainable Management Criteria and Monitoring Network

Chapters 7 and 8 identify the undesirable results of five sustainability indicators relevant to the SLO Basin. These results include: 1) further groundwater level decline; 2) reduction in groundwater storage; 3) depletion of interconnected surface water bodies; 4) water quality degradation; and 5) land subsidence. Within these chapters, the undesirable results for each sustainability indicator will be defined.

**GSC MEETINGS:** 06/10/2020; 09/09/2020

**WORKSHOP:** Approx. 05/2020

**REVIEW AND COMMENT:** Approx. 09/2020

### Chapters 9-10: Plan to Sustainability

Chapters 9 and 10 identify projects, management actions, and the implementation plan that will bring groundwater use into balance and meet the sustainable management criteria identified in Chapters 7 and 8.

**GSC MEETINGS:** 12/09/2020; 03/10/2021

**WORKSHOP:** Approx. 02/2021

**REVIEW AND COMMENT:** Approx. 03/2021

## GSP DEVELOPMENT TIMELINE



### September 11 GSC Meeting Summary, continued

The consultant team from GSI and Cleath-Harris Geologists presented a detailed description of the SLO Basin, including the following details:

- Confirmation of the Basin boundary
- Groundwater conditions within the Basin
- The geologic make-up of the Basin and how it affects groundwater
- Groundwater hydrographs and how they are interpreted
- Gaps in the well monitoring network

GSI also gave a presentation about the integrated groundwater/surface water model. The model, which is being developed using GSFLOW, will simulate how water moves through the SLO Basin above- and below-ground. The model will be calibrated using past observed conditions to gain confidence that the water system in the SLO Basin is accurately represented and will then be used to simulate the effects of projects and management actions on the Basin.

The screenshot shows the website's layout with a dark blue header containing navigation links like 'Calendar', 'Submit Comment', and 'Register'. The main content area features a large landscape image and a section titled 'Building a Sustainable Groundwater Future in the SLO Basin'. Below this, there is a 'Get Involved' section with a 'Register as an Interested Party' button and a 'Submit Comment' button. A 'Your voice is important. Get involved:' section follows, with four icons representing different ways to participate: 'REGISTER AS AN INTERESTED PARTY', 'ATTEND A PUBLIC MEETING', 'ATTEND A PUBLIC WORKSHOP', and 'REVIEW AND COMMENT ON DOCUMENTS'. At the bottom, a 'Recent Project News' section lists three articles with their dates and titles.

## Check Out the Updated Groundwater Portal at SLOWaterBasin.com

In response to stakeholder feedback and to support meaningful participation in the GSP development process, the Groundwater Portal website was updated last month. Find expanded educational content and easy access to documents open for public comment. If you have additional suggestions on how we can improve our stakeholder outreach efforts, submit your feedback at SLOWaterBasin.com click on “Comment.”

## Questions and Accommodation Requests

If you have any questions, if you wish to receive materials about the GSP development by mail, or if you'd like to request accommodations to attend an upcoming event or workshop, including translation services, contact Dick Tzou at [dtzou@co.slo.ca.us](mailto:dtzou@co.slo.ca.us) or 805-781-4473.

### You can also contact us by mail:

County of San Luis Obispo Department of Public Works  
 County Government Center, Room 206  
 San Luis Obispo, CA 93408

Si necesita solicitar alojamiento para asistir a un próximo evento, incluidos los servicios de traducción, comuníquese con Dick Tzou a [dtzou@co.slo.ca.us](mailto:dtzou@co.slo.ca.us) o al 805-781-4473.